



# Certified Community Behavioral Health Clinics Planning Grant

## Sound Planning Drives Solid Implementation

### EFFECTIVE PLANNING WITHIN TIME CONSTRAINTS

Congratulations on receiving a Substance Abuse and Mental Health Services Administration (SAMHSA) planning grant. As a planning grant awardee, you are eligible to apply for and, if selected, join the CCBHC Medicaid Demonstration (Demonstration) starting July 1, 2024. It is imperative to develop an infrastructure that promotes a CCBHC model of care that is both sustainable and repeatable. States must implement several key deliverables simultaneously between March 2023 and March 2024, which requires careful planning. States that do not meet these milestones jeopardize their ability to apply for the Demonstration.

### HOW WE CAN HELP

Myers and Stauffer has substantial experience in the development and expansion of CCBHC programs. Our highly trained, cross-functional team includes clinicians, health-policy staff, accountants, rate-setting professionals, quality leads, and health information-technology staff with the depth and breadth of experience to support state leadership with all aspects of this initiative. On the next page, we have listed key activities required during the 12-month planning period and how we can collaborate with you to accomplish them.

### WHAT OUR CLIENTS ARE SAYING

*"Myers and Stauffer supported us in moving forward with the development of our state's CCBHCs. Their work was tremendously impactful in enhancing our behavioral health system. Implementing such a complex model into a Medicaid system is no small feat, and their expertise, professionalism, and eagerness to support us provided our team with the tools for success!"*

— State Medicaid Agency

# CCBHC PLANNING GRANT SERVICES



## STAKEHOLDER ENGAGEMENT

We know that a strong stakeholder voice is critical to making informed decisions that lead to early program successes. Our staff have supported other states in convening and moderating CCBHC steering committees, conducting outreach and engagement to solicit stakeholder input from clients, community-based providers and local, state, and federal agencies, all in the spirit of building partnerships and promoting the availability of CCBHC services.



## PROVIDER CERTIFICATION

To become certified, providers must meet SAMHSA criteria in six areas: staffing; availability and access to services; care coordination; scope of services; quality and other reporting; and organization authority, governance and accreditation. We have established certification processes and review procedures, including a recommendation on certification status.



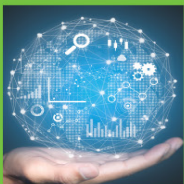
## PROSPECTIVE PAYMENT SYSTEMS

The CCBHC program design promotes effective patient-centered care through the use of care coordination and sustainability by providing a PPS funding model that supports delivery of high-quality services. Our team is well-versed in the development of rate models, design and implementation of the billing procedures, and training of providers on the cost reporting methods that you can leverage to ensure efficient processes.



## SERVICE PROVISION CRITERIA

States must establish the capacity to provide services according to SAMHSA criteria. Meeting the exacting requirements of the CCBHC Demonstration program can be challenging for new providers. Myers and Stauffer will help you and your CCBHC providers with a plan to build capacity.



## DATA COLLECTION & REPORTING CAPACITY

States and their CCBHC providers need to understand their electronic health record capability for reporting the required CCBHC measures. Our team has developed robust monitoring and oversight resource materials for use by the CCBHCs and for the state to prepare to participate in the Demonstration evaluation.



## DEMONSTRATION PROPOSAL MANAGEMENT

Experience has taught us the importance of writing a strong Demonstration application. We are fluent in the language of these proposals and their requirements. In fact, our support of one state in the writing of their application resulted in their approval as one of the original eight states to participate in the Demonstration.

## FOR MORE INFORMATION

**Tara Clark, CPA**  
Member  
PH 888.749.5799  
tclark@mslc.com

**Jerry Dubberly, PharmD**  
Principal  
PH 404.524.9519  
jdubberly@mslc.com

**Jared Duzan, CFE**  
Principal  
PH 317.846.9521  
jduzan@mslc.com

**Alicia Jansen, RN**  
Senior Manager  
PH 317.815.2942  
ajansen@mslc.com

**Julia Kotchevar, MA**  
Director  
PH 512.340.7425  
jkotchevar@mslc.com

